

MKS EUROPE

MKS-12 / 14 / 16 / 18 / 20



Rakes





**Your partner
in farming**





When it comes to crafting the perfect hay, you need a balance of **quantity and quality**. At Sitrex, we understand that every stage of the process matters. That's why, since 1970, we've been innovating to help you preserve the feed value of your forage.

From the moment you start **harvesting** to the final **bale wrap**, Sitrex is your trusted partner. We're not just experts: we're farmers at heart and we understand the challenges you face. Together, we'll master every shade of green and gold, ensuring your forage is the best it can be.

Choose Sitrex's agricultural machinery to turn your **haymaking** into a success.

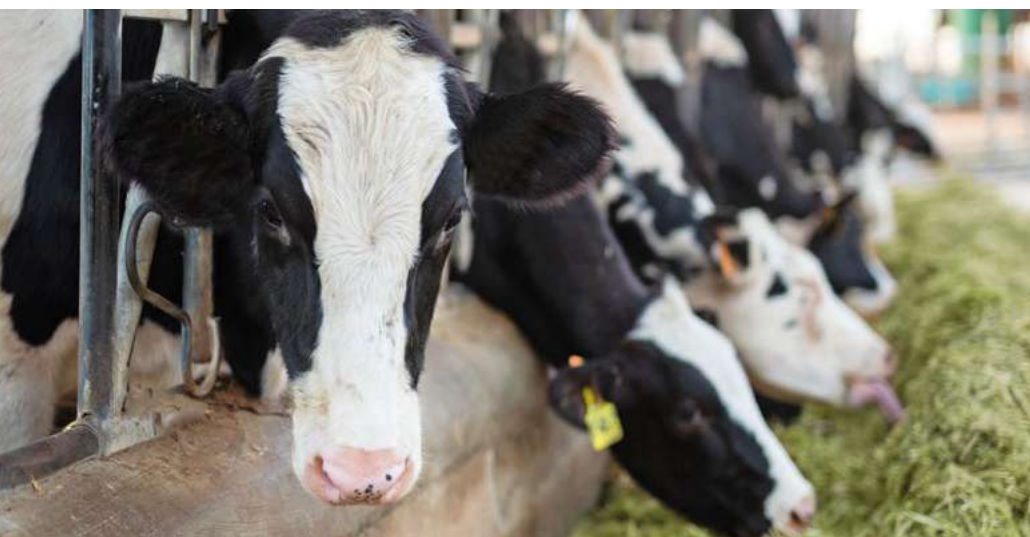
MKS EUROPE

MKS-12 / 14 / 16 / 18 / 20

Fast, high quality hay raking.

SITREX MKS series trailed wheel rakes offer **the best there is in hay-raking**. They are designed to be used at a high working speed over any terrain and with any type of forage, always guaranteeing excellent work quality. **The range consists of three models with working widths from 7.50 m to 9.60 m that can meet the needs of any size of farm.** Once the job is finished you can quickly put the machine back into the transport position, reducing idle time to a minimum.

The entire frame is made from wide-section, heavy-gauge tubular steel. **The pantograph opening system with a telescopic drawbar reduces the length of the machine during work and better stabilises the raking wings while working.** All of this reduces operating costs and increases machine life. The new design of the rear axle and wheel support allows to have large sizes wheel with large windrow widths together with a road transport width of 2.55 meters.



Better forage means more milk production and healthier animals. The quality of the forage is fundamental for animal health and for good company revenues.



Auto-steering system

The system allows easy adjustment of the reactivity of the steering wheels according to the tractor. The rear double rod cylinder is hydraulically controlled by the cylinder located on the drawbar through a hydraulic circuit pressurised at the factory.



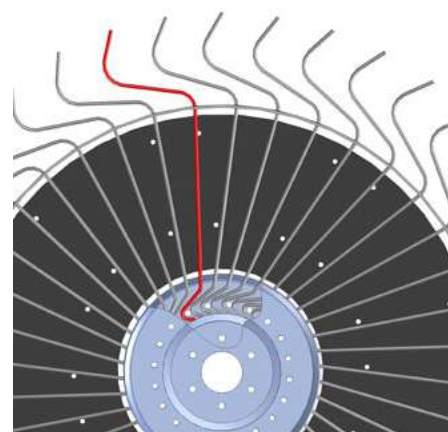
New locking system

Thanks to the new automatic locking system, the raking wings can be quickly locked in the transport position and vice versa. This lets you move quickly from one field to the next.



Transport width and effective working height

The machine can be quickly put into the transport position without having to remove any components. The transport width is 2550 mm. The height of the rear crosspiece (1500 mm from the ground) makes it possible to work even with large quantities of forage without interfering with the formation of the windrow.



Heavy crop wheel

MKS EUROPE

MKS-12 / 14 / 16 / 18 / 20

MKS Europe, details that make a difference.



Drawbar – 90° steering angle

The cat. II swinging drawbar automatically controls the steering of the rear wheels.



Adjustment of the rake wheel pressure on the ground

A crank allows you to quickly adjust the pressure of the rake wheels on the ground. Even with green forage conditions, this adjustment optimises the smooth, gentle movement of the product in order to obtain a well-formed windrow in all conditions



Brakes

The rotation of the wheels is made smoother by a new brake equipped with a pair of clutch discs, thus making it possible to reduce wheel vibration during transport and work.



Adjustment of the windrow width

Adjustment of the windrow width is quick and easy and is independent from the working width. The cranks adjust the inclination of the last 4 rake wheels (2 on the right and 2 on the left).



Central rake wheel kit (optional)

The central rake wheel kit moves the strip of forage underneath the windrow for more uniform drying. The kit is hydraulically controlled together with the rake wheels on the raking wings, and can be kept permanently in the raised position.



Transport position

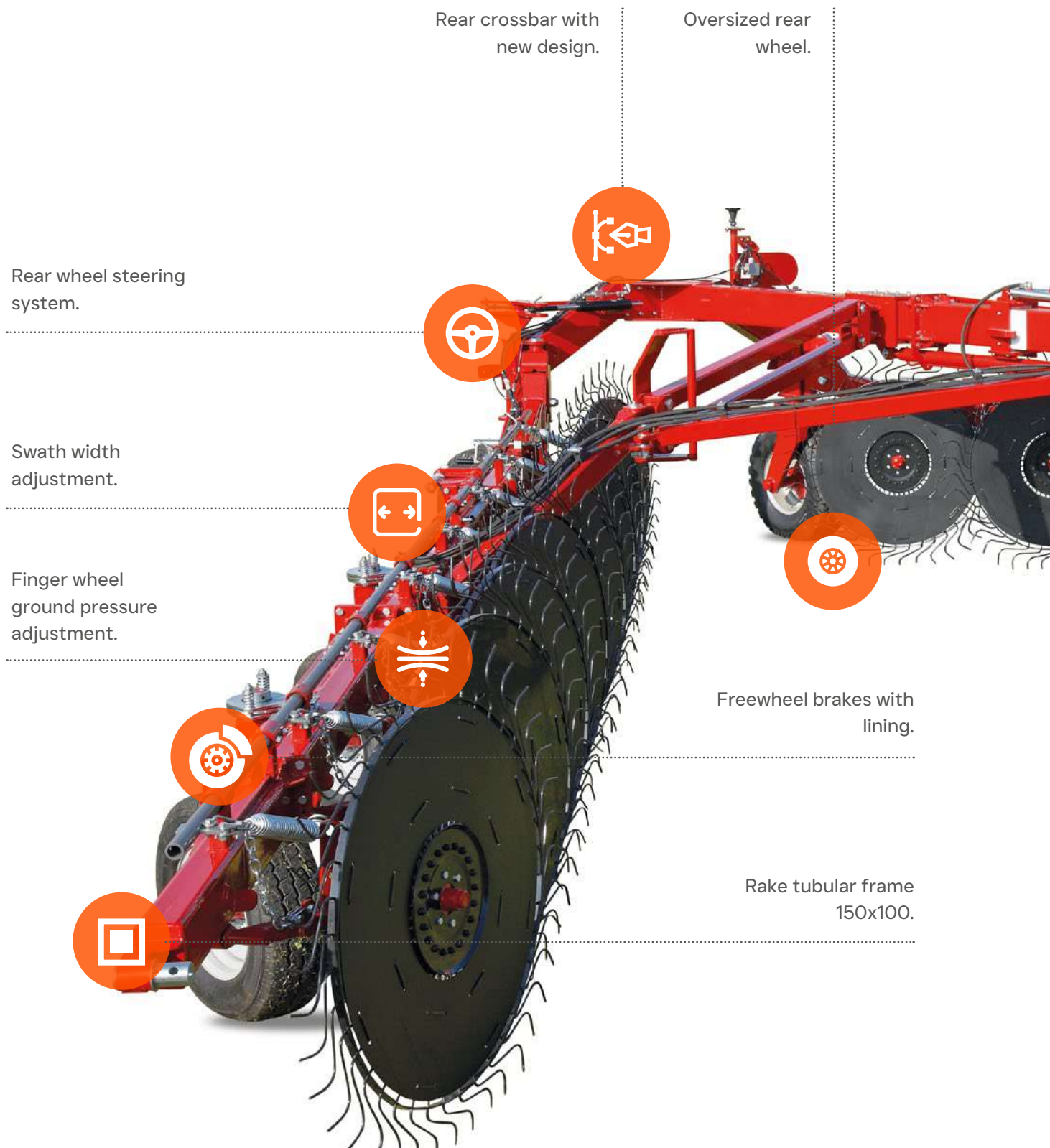
Machine in transport position on the road



Spare wheel kit (optional)

MKS EUROPE

MKS-12 / 14 / 16 / 18 / 20



Rear crossbar with
new design.

Oversized rear
wheel.

Rear wheel steering
system.

Swath width
adjustment.

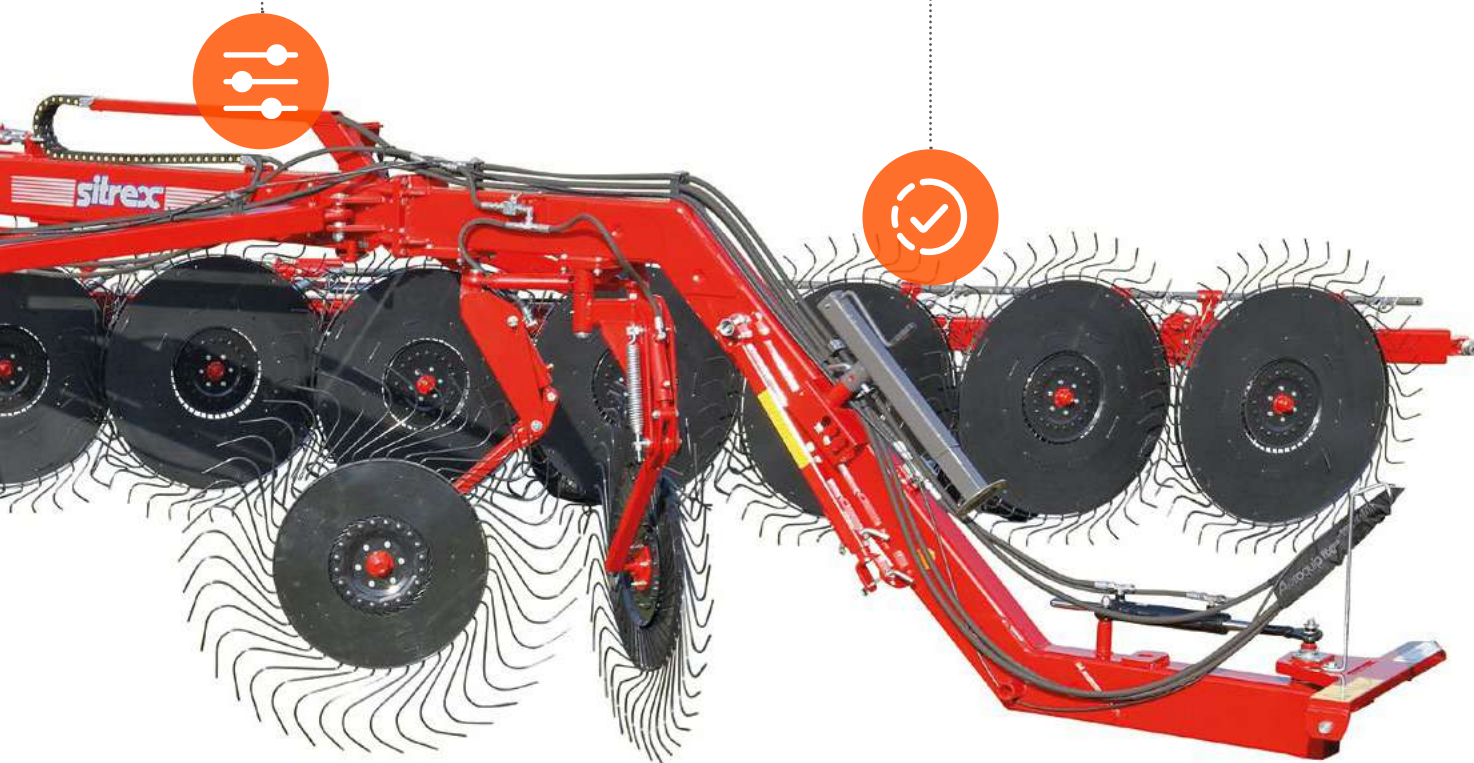
Finger wheel
ground pressure
adjustment.

Freewheel brakes with
lining.

Rake tubular frame
150x100.

Pantograph opening system, which allows the drawbar to be shortened during work.

Equipped with heavy crop finger wheels for moist and heavy hay.



**Discover the
characteristics of
“MKS Europe”.**

MKS EUROPE

MKS-12 / 14 / 16 / 18 / 20

Specifications	EUROPE MKS 12	EUROPE MKS 14	EUROPE MKS 16	EUROPE MKS 18	EUROPE MKS 20
Number of Wheels	12	14	16	18	20
Diameter of the wheels	55" - 1.4 m	55" - 1.4 m	55" - 1.4 m	55" - 1.4 m	55" - 1.4 m
Maximum swath width	71" - 1.8m	71" - 1.8m	71" - 1.8m	71" - 1.8m	71" - 1.8m
Minimum swath width	43.3" - 1.1 m	43.3" - 1.1 m	43.3" - 1.1 m	43.3" - 1.1 m	43.3" - 1.1 m
Maximum working width	24' 7" - 7.5m	27' 11" - 8.5 m	31' 6" - 9.6 m	35' 2" - 10.7 m	38' 9" - 11.8 m
Transport Height	94.5" - 2.4 m	94.5" - 2.4 m	94.5" - 2.4 m	94.5" - 2.4 m	94.5" - 2.4 m
Tractor power	60 HP - 44 kW	70 HP - 52 kW	70 HP - 52 kW	90 HP - 66 kW	90 HP - 66 kW
Working speed	9 mph - 15 km/h	9 mph - 15 km/h	9 mph - 15 km/h	9 mph - 15 km/h	9 mph - 15 km/h
Frontal wheel	225/70 R15	225/70 R15	225/70 R15	225/70 R15	225/70 R15
Rear wheel	11.5/80 R15.3	11.5/80 R15.3	11.5/80 R15.3	11.5/80 R15.3	11.5/80 R15.3
Transport width	100" - 2.55 m	100" - 2.55 m	100" - 2.55 m	100" - 2.55 m	100" - 2.55 m
Transport length	34' 5.4" - 10.5 m	34' 5.4" - 10.5 m	34' 5.4" - 10.5 m	40' 4" - 12.3 m	40' 4" - 12.3 m
Weight	6240 Lbs - 2830 kg	6790 Lbs - 3080 kg	7030 Lbs - 3190 kg	7920 Lbs - 3590 kg	8135 Lbs - 3690 kg

Designs, materials and/or specifications are subject to change without notice and without liability thereof.



Your partner in farming



Organization with certified Management System ISO 9001

Viale Grecia, 22 - 06018 Trestina (PG) - ITALY | **Phone:** +39 075.854.00.21 | **Email:** sitrex@sitrex.it | **www.sitrex.com**